

1893-1894

George Menard
J. B. Morin

Alfred Bertrand
Henry Flageole

Joseph Vallancourt

1894-1895

William Dwyer
Joseph Provencal, Jr.
Olivier Baithazar

Pacifique Hubert
George Plante
George Coashe

Bernard Lynch
Joseph Plante
Gustave Provencal

1895-1896

Frank Caron

Felix Dauphin
Ignace Beland

Theophile Lambert

The following were at one time pewholders in the old
St. James church:

Narcisse Paquet

Pierre Merrilat

J. B. Reinich

Parish Statistics.

Gathered from Extant Notes Old St. James Church

	1881	1882	1883	1884	1885	1886	1887	1888	1889	1890	1891	1892	1893
Number of families	86	85	89		87	66	69	71	70	111	116	108	115
Baptisms				8	8	26	23	22	25	14	21	25	21
Deaths	7	9	7		8	4	5	2	9	5	5	12	11

Mission Church at Goodrich.

	1897	1898	
Number of families	55	45	The marriages at St. James church and the Mission church at Goodrich from 1877-1899 have been noted in the preceeding pages.
Baptisms	8	8	
Deaths	1	2	

Biographical Notes, Etc.

Father Simard was born at La Baie St. Paul, in the county of Charlevoix, P. Q., Canada, on Jan. 20, 1866. His parents were Louis H. Simard, a civil employee, and Christine Pichet. He was baptised on Jan. 21, 1866, by Rev. N. Gingras, who, as it appears, was at one time pastor at Bourbonnais. He made his classical studies at the Seminary of Quebec in 1878-1886, where he was made bachelor of arts. From 1886-1890 he followed the theological course at the University of Laval and was ordained priest for the Archdiocese of Quebec by His Eminence Cardinal Tacheau, on May 30, 1890. His first appointment was assistant priest at St. Ephrem de Tring, Beauce county, P. Q., from June 1890 to September 1891. Afterwards he engaged in mission work at Anticosti island, prefectship of the Gulf of St. Lawrence, from September 1891 to September 1892, and also at Natashquan and Blanc Sablon, Labrador, from September 1892 to September 1894. Then he was induced to come to the states on September 11, 1894, to be appointed assistant at Notre Dame, Chicago, as the need of French priests was keenly felt. On December 31, 1894, he was appointed pastor of St. James, near Irwin, which position he held until September 29, 1905, when he took charge of Sacred Heart church, Aurora, Ill. Father Simard met with very trying difficulties and hardships at the beginning of his priestly career, especially in making the above mentioned reorganization and transference. God only knows the mental sufferings, trials, disappointments, distrust, adverse, unjustified and undeserved criticism he had to contend with in endeavoring to bring the undertaking to a final success. It may truly be said of him that he was the victim of delicate and very trying circumstances.

The appointment of the first pastor at Goodrich meant not only to take charge of those members who had severed themselves from the old St. James mother parish but also of the mission parish of SS. Peter and Paul's, Pilot, which

up to then was attended from St. Mary's, Kankakee. The pastor found at Goodrich a small congregation of souls, somewhat disturbed by the differences above mentioned. It was his delicate task of directing the energies into harmonious and useful channels. This mission was to be accomplished by great patience, tact and endurance.

Following is the letter of appointment:

"20th June, 1899.

"I hereby appoint the Rev. J. Meyer, pastor of Pilot and Goodrich, Kankakee county, Illinois. He will take entire charge of these missions next week.

"P. A. Feehan,
"Abp. Chicago."

On July 1, 1899, the pastor said mass for the first time in Goodrich. Divine service was conducted in French and English in the church at Goodrich and in German, and later also in English in the mission parish of SS. Peter and Paul's Pilot. Mass was said in both churches every Sunday and feast days of obligation with alternating hours. The church at Goodrich was dedicated to the Sacred Heart.

"I am the good shepherd, and I know mine and mine know me."—Jo. X, 14. Mindful of these words of the Divine Shepherd the new pastor took up a careful census, which showed the following families:

Angelique Blanchette	Louis Joron, Sr.
Julie Bertrand	Hubert Jarvais
Louis Bertrand	David Jones
Mose Bertrand	Eusebe Lapierre
Philibert Bertrand	Cornelius Luby
Joseph Caron	Joel Menard
John Caron	George Menard
Thomas Caron	Joel A. Menard
Fred Caron	Joseph Provencal
John Cashen	Gustave Provencal
Toussaint Denault	Louis Pare
Albert Denault	Peter Pare
Fred Denault	Joseph Plante
Remi Denault	Arthur Plante
Alec Denault	George Plante

Adeline Dumas

George Duval

Jacob Dluzak

William Dwyer

Joseph Desnoyer

Patrick Dunn

Henry Flageole

Marie Girard

Joseph Gagnon

Antoine Saucier

Adolph St. Germain

Romain St. Germain

Frederick Steyer

Ferdinand Sweeney

William Scanlon

Louis Tetreault

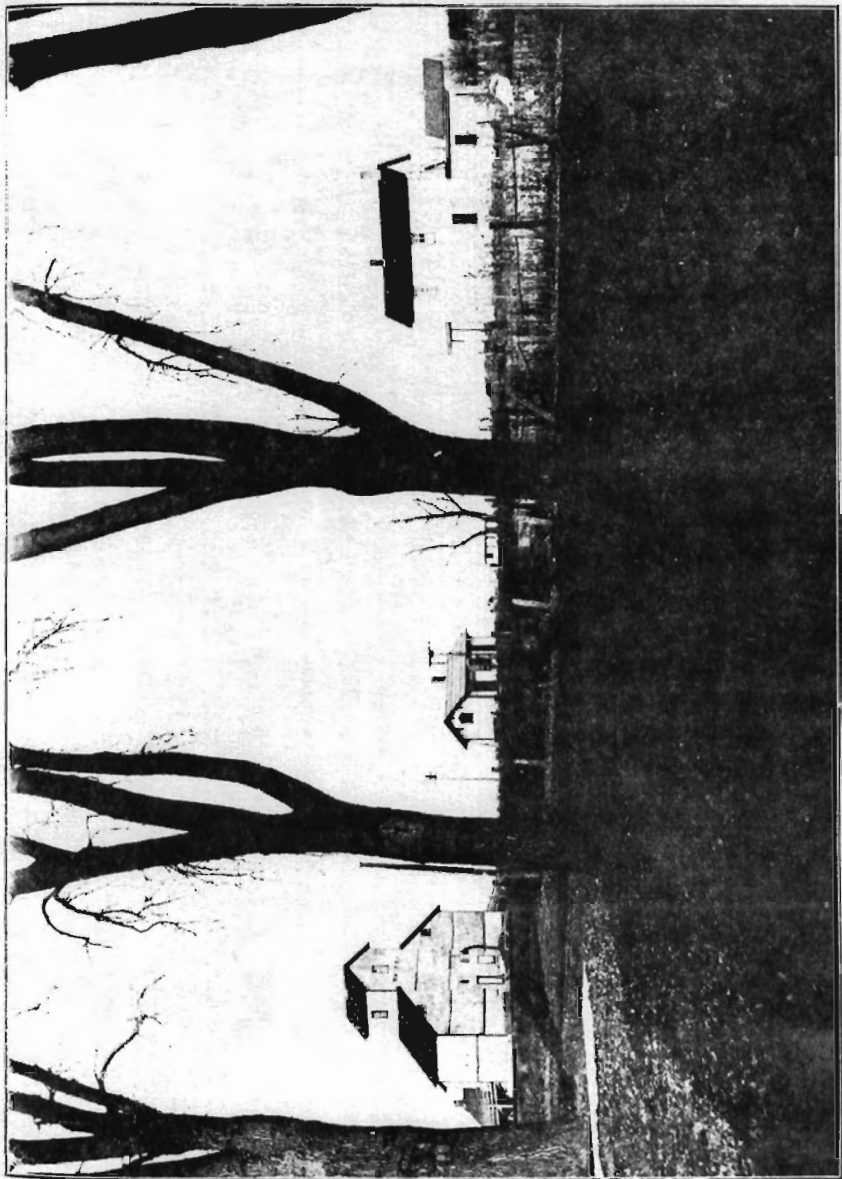
Charles Tetreault

Theodore Tetreault

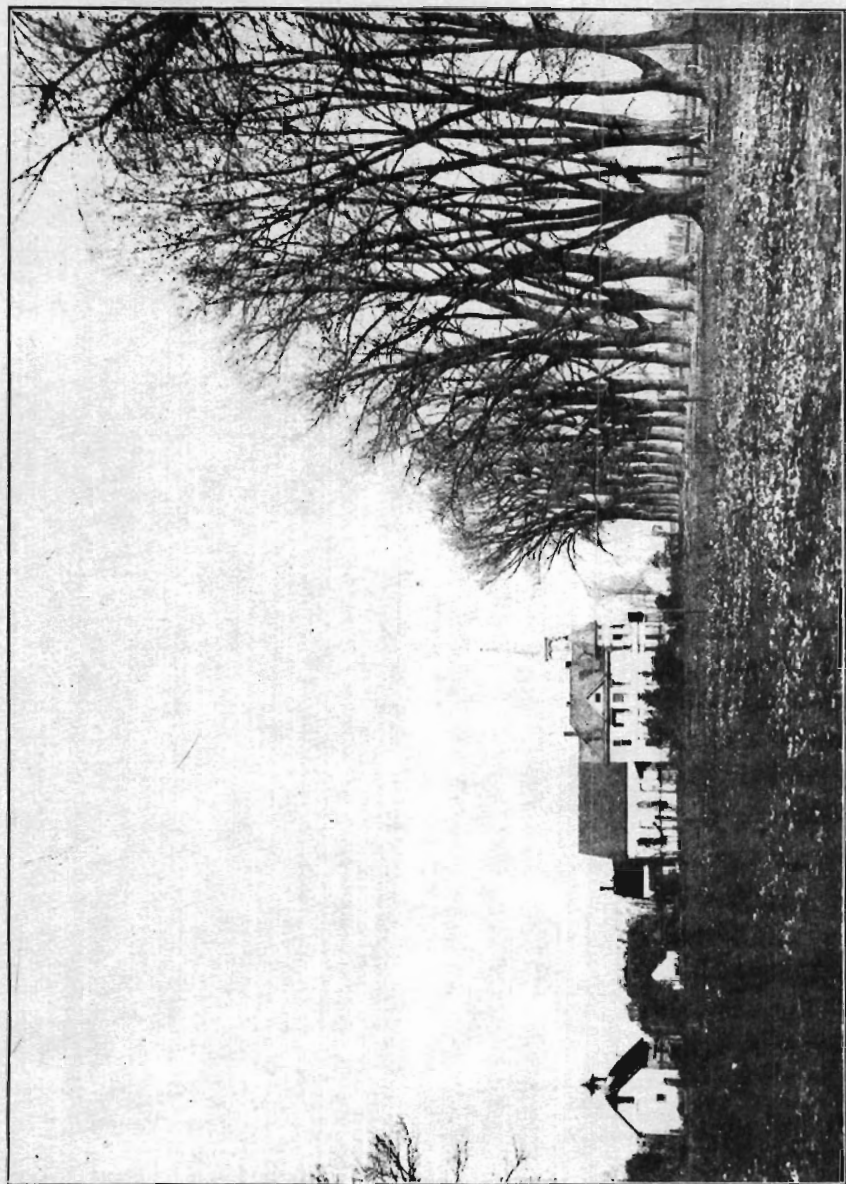
In the fall of 1899, shortly after his appointment, the pastor took up a subscription amounting to \$1610.55 for the erection of a new parsonage at the cost of \$5579.50, including heating apparatus. On August 30, 1900, the parsonage was ready for occupancy.

On account of these activities the congregation was in a much neglected state, Easter duties were not attended to and older children were lacking the elementary knowledge of religion, but in spite of drawbacks and chaotic conditions none of the sheep had gone astray. In order to stimulate religious fervor and inspiration a mission was given, conducted by the Rev. Ignace Adam, S. J., from Canada, which proved to be a great impetus in bringing back religious life to the parish. At the end of the mission the Apostleship of Prayer was organized. Again on June 9, 1901, a triduum conducted by the Dominican Fathers Couette and Benoit took place. On November 14, 1906, a successful mission was given by Father Lalande, S. J., from Canada. On September 19 to 26, 1915, another mission was given by Rev. A. Dallaire, O. M. I., of Duluth, during which a mission cross was blessed. In connection with the annual Forty-Hours' devotion a little mission is given every year in order to revive religious ambition, fervor and zeal. The Rosary and Altar society was organized December 8, 1915. The object of this society is to foster spiritual life and to provide for the adornment and embellishment of the altar, the members having in view the words of Holy Scripture: "I have loved, O Lord, the beauty of Thy house, and the place where Thy glory dwelleth." Every married

lady of the parish prides herself in being a member of such a worthy and honorable parish society. During the course of a mission in October, 1921, conducted by the Rev. Father St. Aubin, C. S. V., the Holy Name society and the Purgatorial confraternity were organized.



GOODRICH ILL.



GOODRICH—SACRED HEART CHURCH AND PARSONAGE

Statistics

Baptisms.

The first baptism entered was of Aldea Vina Plante, child of Arthur Plante and Emma Desnoyer, born July 7, 1899, and baptized July 16, 1899. The sponsors were Joseph Desnoyer and Emma Plante.

Number of baptisms in subsequent years:

1899—4	1905—14	1911—15	1917—13
1900—11.	1906—10	1912—11	1918—14
1901—12	1907—12	1913—15	1919—7
1902—10	1908—15	1914—11	1920—11
1903—13	1909—16	1915—17	
1904—17	1910—15	1916—8	

First Communion.

(October 14th, 1900)

Frank Blanchette	Gordon Bertrand	George Bertrand
Frederic Bertrand	Edward Bertrand	Victor Bertrand
Benonie Menard	Walter Lacost	Walter Gagnon
William Jarvais	Fred Tetreault	Catherine Sweeney
Alec Desjardin		Mary Sweeney

First Confirmation.

On September 18, 1902, the Right Rev. Bishop P. Muldoon, administered the sacrament of confirmation to 20 children. The sponsors were: Romain and Louisa St. Germain. The Most Rev. Archbishop J. E. Quigley administered confirmation on October 10, 1912, 61 being confirmed. Sponsors were: Elmer Taylor and Mrs. Cora Denault. On October 30, 1919, the Most Rev. Archbishop George W. Mundelein made his canonical visitation to the parish, when 22 were confirmed, the sponsors being Albert Denault and Mrs. Mary Dunn.

Marriages.

The first marriage solemnized in Sacred Heart church with a resident pastor was between Arthur Bertrand, son

of Honore and Julia Bertrand, and Lola Caron, daughter of Joseph and Melvina Caron, on April 19, 1900.

Number of marriages in subsequent years:

1900—4	1905—1	1910—1	1916—1
1901—1	1906—3	1911—1	1918—2
1902—6	1907—2	1913—3	1919—
1903—1	1908—3	1914—1	1920—1
1904—3	1909—1	1915—2	

Burials.

The first burial was on August 30, 1899, of Henry Flageole, born in Canada, age 74.

Number of deaths in the following years:

1899—3	1907—2	1912—2	1917—2
1901—4	1908—4	1913—3	1918—7
1903—1	1909—2	1914—3	1919—1
1905—3	1910—4	1915—1	1920—1
1906—4	1911—2	1916—3	

On the occasion of confirmation, September 18, 1902, the Right Rev. Bishop P. Muldoon blessed a new bell. The sponsors were as follows:

Mr. and Mrs. Wm. O'Connor	F. Corcoran James Sweeney
Mr. and Mrs. J. J. Caron Louis Bertrand	J. C. Dolan Mr. and Mrs. F. Sweeney
George Duval	Mr. and Mrs. P. Schwarz
Mrs. A. St. Germain	Mrs. M. L. Venn
Mrs. Joel Menard	Joseph Lambert
Mrs. C. Thoomy	Julius Bertrand
A. Denault	J. Provencal
Mr. and Mrs. P. Lambert	W. Meyer
Mr. and Mrs. W. Legris	W. Fritz
T. Lafond	Mr. and Mrs. C. Reuse
J. Kruse	Mary Rafferty
Mr. and Mrs. E. Bergeron	Mrs. Margaret Lacy
Mrs. Sarah Nugent	

Spiritual Fruits.

It is the distinct privilege of the church to segregate so many of her children, who form as it were the elite of Christ's flock, by entering religious life. Young men and young women who out of free choice consecrate themselves body and soul to a special and higher service of God by the vows of poverty, obedience and chastity, mindful of the Lord's sweet invitation, "Come, follow me." These privileged ones spend their entire lives, not in the pursuit of personal gain or from other purely human motives, but in a spirit of abnegation and sacrifice of self for the sake and love of God and the spiritual, mental, moral and physical benefit of their fellowmen, be it in the class room, in a hospital, on the battle field or in foreign mission lands. They gladly listen to the call: "Go forth out of thy father's house and come into the land, which I shall show thee," (I Gen. XII. I).

Two young ladies of the parish responded to this higher call:

Miss Rosella Denault (Sister St. Vincent of Paul) entered the Congregation of the Sisters Servants of the Sacred Heart of Mary at Beaverville, Ill., in 1914.

Miss Mary Evans (Sister Saint Jerome) entered the Congregation of the Sisters of Notre Dame in 1918 at Montreal, Canada.

A number of converts have also been received into the church.

Church Improvements.

When the pastor took charge of the new parish he found a church with bare walls. The first improvement was the remodeling of the high altar in 1901. A Sacred Heart statue for it was presented by J. J. Caron in 1902. A beautiful ostensorium was the gift of George Menard. In the same year a bell was put in the tower. As the plaster of the walls and ceiling was in a precarious condition it became necessary to cover the walls and ceiling with steel plates, which was done in 1910. A special division with

arches was built to set apart the sanctuary from the nave. This addition with a vestibule in the front, the installation of a heating plant and the decorating of the inside was done at an outlay of \$1972.21, collected by the pastor.

In 1911 the old wooden sidewalk in front of the church was replaced by a cement walk.

Sacred Heart church enjoys the distinct honor of possessing beautiful art glass windows, presented by the following donors in 1911, 1912 and 1913: Sanctuary—Louis R. Joron, in memory of Louis Joron; John Cashen, in memory of Anna Cashen. Nave—Theophile and Felix Caron, Solomon Dumas, Jerome Evans, the children of Patrick Dunn, Eugene Schmidt, George Duval, D. Dwyer and Fred Denault. The center church front windows were presented by Mrs. Julia Joron, and the side windows by M. Martin and children and William Frieling.

A cork carpet was the gift of Arthur Denault in 1911.

In 1913 a beautiful carved communion rail was donated by Miss Bridget Daylor.

The sanctuary lamp in 1913 and the two brass chandeliers in 1915 were additional gifts of Mr. John and Miss Julia Cashen.

In 1915 two more gifts were made: A baptismal font by Arthur Bertrand and a gold chalice by George Duval.

In the same year the church was furnished with a new confessional.

In 1916 a beautiful Christmas crib was presented by Mr. and Mrs. Peter Perry.

The small side altars were partly replaced by two larger ones in 1917, the gift of Remi Denault and Edward and Joseph Dumas, jointly. The larger St. Joseph's and Queen of Heaven statues, to harmonize with the improved altars, were respectively donated by William Frieling and F. Sweeney and Scheibel, jointly, in the same year. Various minor gifts were also presented to the church by other members of the parish.

Church Committee.

The church committee was organized by a decree of the diocesan synod in 1905 to assist the pastor concerning the financial matters of the church. It was ordained that a committee of two, and of more in larger parishes, approved by the ordinary, be appointed in every parish. The following have been appointed to that office:

1906-1910—L. Joron Sr. and D. Dwyer.

1910-1917—Alfred Bertrand and D. Dwyer.

1917-1921—Ed. Dumas and D. Dwyer.

1921—E. Taylor, Alfred Bertrand, P. Knittel.

Sunday collectors: J. J. Caron. D. Dwyer. John Schmidt.

Financial.

One of the most interesting studies in the history of a parish is the financial or business side of religion. Granted money is not everything in church work, but is after all just as necessary as the daily bread, being that members of a congregation are not merely spiritual members but members composed of body and soul. The average pastor in our modern days has to be more or less a financier. He has to raise funds for the church and this is not as easy as it may appear. This science is only acquired in the great school of practice, called experience. Many of the laity, who considered this a pleasure and distinctive honor, gave it up in disgust, hence the burden falls upon the pastor who has to face the cold bare facts of collecting and of meeting unfounded objections and lame excuses. The life of a pastor has at least in this respect more rain than sunshine, more thorns than roses. Collecting funds is the least appealing of all labors in the Lord's vineyard.

The reminiscence of his many and repeated collecting trips afford perhaps ample opportunities for lugubrious reflections, but also—and this is the consoling part of it—very often he meets with a kind and welcome reception. He will find—thanks to God—some warm, golden hearts who give readily, generously, and this will amply compensate for his disappointments and hardships in collecting the funds for the advancement and fostering of the interests of the church.

On the first collecting tour in Sacred Heart parish the sum of \$1610.55 for the erection of a parsonage was subscribed. An additional sum was raised by two bazaars. The parish members cooperated generously with the pastor and achieved remarkable results.

A few items of the first semi-annual financial report of 1899 show:

Sunday collection, \$29.08.

Pew rent, \$303.25.

Christmas offering, \$18.26.

The financial income has been growing steadily as shown by revenues in 1900 of \$1033.44—Subscription for erection of parsonage not included—and in 1920 when they reached \$2332.64.

Increase, Decrease, Pew Holders.

It is a rather peculiar fact about Sacred Heart parish that its retiring members have not settled near the church for which they have made so many sacrifices and where they worshipped in their younger days. The observer is the more mystified, as the retiring members would live at less expense if they clustered around their country church, with its railroad facilities and other modern accommodations, where they could spend the remaining days of their lives in peace and ease near their children, instead of following the modern trend to move to a neighboring town, where they surely must feel out of their element. The natural result caused by this fact was a decrease instead of an increase of families. Another fact cannot be overlooked: It is the fashion, if it may be called thus, to move to other states with great uncertainties. If we once more examine the family list of 1899 and compare it with the names of families in 1919 we will discover that many names have entirely disappeared.

Pew Holders in 1919.

Charles Aultz

Albert Denault

Joseph Denault

William Seimetz

Herman Martin

Arthur Bertrand

Solomon Dumas	Joseph Girard
William McGovern	Fred Denault
John Steyer	Edward Dumas
Louis R. Joron	Peter Perry
William Frieling	Mose Bertrand
Jerome Evans	Arthur Plante
David Dwyer.	Victor Bertrand
Peter Knittel.	Joseph Dumas
Henry Bertrand	Joseph Antosz
David Bertrand	Felix Caron
Mrs. L. Meyer	Mrs. E. Keefe
Alvia Garreau	George Bertrand
Eugene Schmidt	Walter Thedrault
William Dunn	Henry Steyer
C. Luby	William Bertrand
Milford Yates	Julius Meyer
John Dunn	James McGinnis
Elmer Taylor	Thomas Martin
John Cashen	John Schmidt
Michael Geelan	Edmond Perry
	Remi Denault

The seat holders were: Joseph Clodi, Charles Couture and Joseph Schmidt.

Visiting Priests

We shall not omit to mention the visits of many priests on the occasion of Forty Hours' Devotion. The parish owes special gratitude to the fathers of St. Viator college, Bourbonnais, who for many years have always so readily responded to the pastor's call to assist him whenever their services were needed. Their forceful sermons were an inspiration to the parishioners and shall long be remembered.

Double Silver Jubilee.

On July 1, 1924 the Silver jubilee of Sacred Heart church as an independent parish, and the twenty-fifth anniversary of the Rev. J. Meyer's pastorate, were duly celebrated.

The Boys in the World War.

The following soldiers of the parish nobly served their country in the world war:

CHARLES GARDNER—Enlisted Dec. 8, 1917. Assigned to Battery C, 13th Field Artillery, regular army Camp Green, North Carolina. Discharged Feb. 28, 1918.

LEWIS GARDNER—Volunteered April 29, 1918. Assigned to Company C, 357 Infantry. Sailed for France May 29th. Wounded Sept. 12, 1918 near Metz. Returned to U. S. Nov. 28 and was discharged Jan. 29, 1919.

LEWIS RINVILLE—Enlisted Aug. 1, 1918. Assigned to Company E, 124th Infantry, 31st Dixie Division. Stationed at Camp Wheeler, Ga.; Camp Mills. Long Island; Camp Merritt, Hoboken, N. J. Served with A. E. F. and sailed from U. S. A. Nov. 2, 1918. Landed at Brest, France, Camp LeMans. Returned to U. S. Jan. 29, 1919 to Camp Stewart, Va. Discharged at Camp Gordon, Ga., Feb. 12, 1919.

ALDEMORE BERTRAND—Enlisted June 24, 1918. Assigned to Company E, 124th Infantry. Stationed at Camp Wheeler, Macon, Ga.; Camp Mills, N. Y.; Embarcation Camp, N. Y.; Camp Lee, Va.; Camp Grant, Ill. Discharged Dec. 26, 1918.

HERMAN MARTIN—Enlisted May 23, 1918. Assigned to Co. E, 3d division, infantry. Stationed at Jefferson Barracks, St. Louis; Fort Mackintosh, Laredo, Texas; Camp Bowie, Fort Worth, Texas. Discharged Nov. 5, 1918.

FRANK STEYER—Enlisted June, 1918. Assigned to 106th regiment Ammunition Train. Stationed at Camp Grant, Ill. Served with A. E.F. and sailed for France Oct. 28, 1918. Was stationed at Bordeaux, St. Nazaire, Le Harve, Rouen, Brest, Marseilles, Paris. Discharged July 16, 1919.

JOHN L. RINVILLE—Enlisted June 24, 1918. Assigned to Co. H, 124th infantry, 31st division. Died of disease at Camp Mills, N. Y., Oct. 17, 1918. Remains entered in St. James cemetery, Irwin, Ill.

ROBERT GARDNER—Enlisted April 1, 1918. Made private first class, Co. F, 139th infantry. Serial number 2,144,557. Killed in action Sept. 26, 1918. Remains entered in grave No. 18, plot No. 1, section No. 41, Argonne American cemetery, Romagne-sous-Montfaucon, Meuse, France.

Cemeteries

Old St. James Cemetery.

When St. James church was transferred to Irwin in 1895 most of the bodies in the cemetery on the west side of the old church were transferred to the new cemetery southeast of Irwin. Only two tomb monuments were noticeable by the writer in 1918. They bear the following inscriptions:

GEORGE

Died Aug. 25, 1869
Age 21 Years

EMMA

Child of John and Mary Jane Brown
Died April 10, 1868

This tomb stone was taken from the former grave at Lehigh cemetery where the above mentioned had been buried and afterwards transferred.

EVA

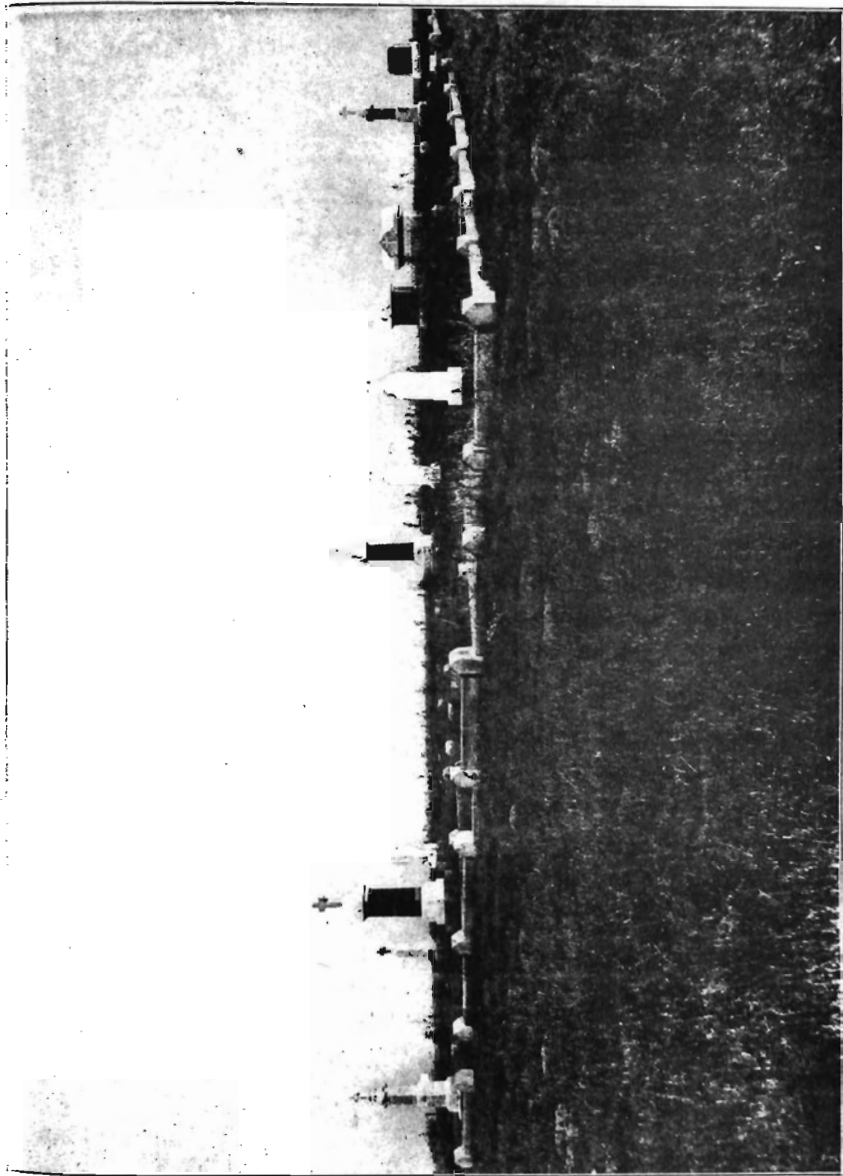
Daughter of Mr. and Mrs. F. Caron
Died Aug. 18, 1889
Age 1 Year-4 Months.

A precious one from us has gone
A voice we loved is stilled
A place is vacant in our home
Which never can be filled.

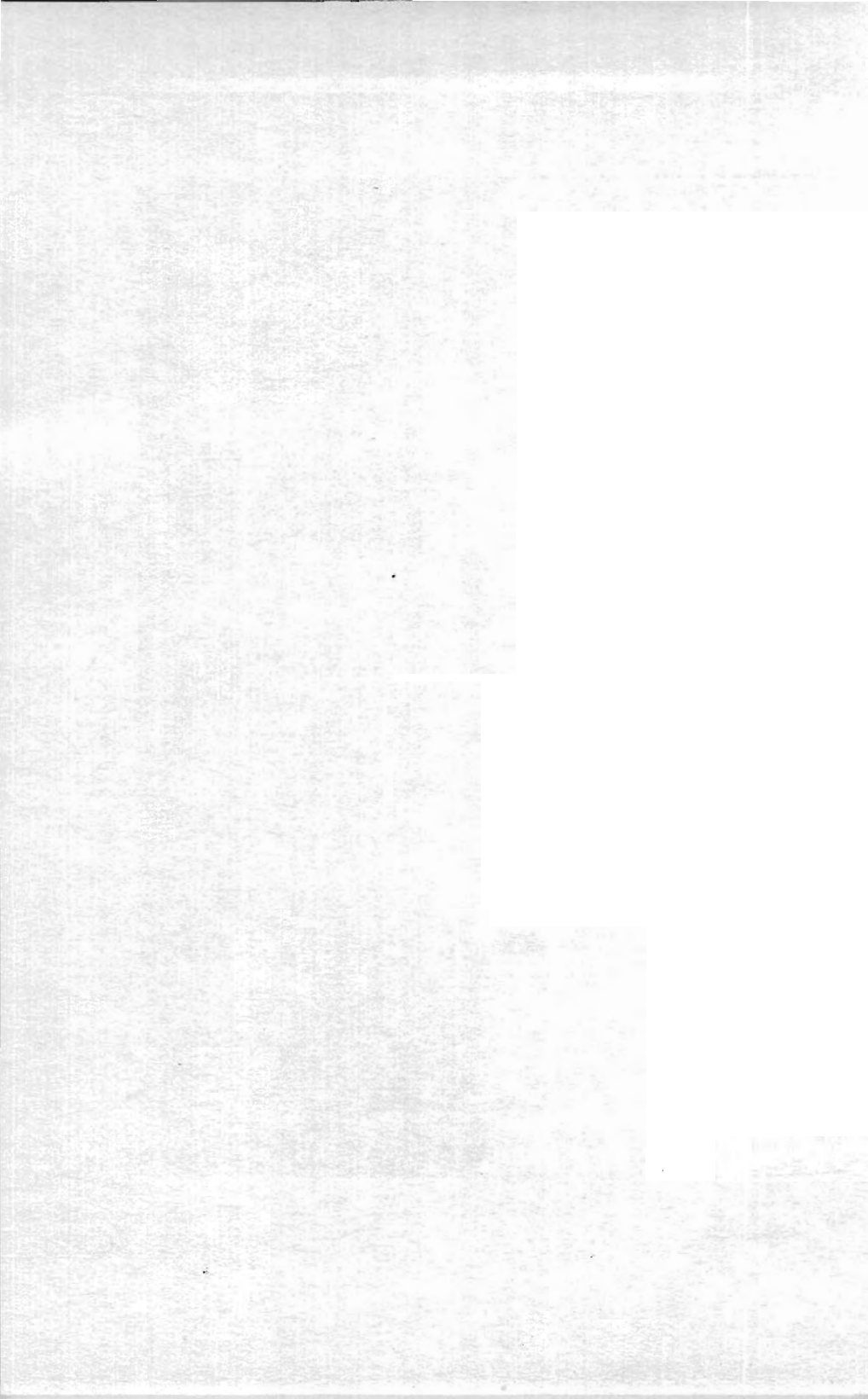
Mount Hope Cemetery Goodrich.

By the consent and approval of a number of the members of the newly organized parish at Goodrich, ground for cemetery purposes was purchased, a short distance east of the church. This location, however, not being entirely satisfactory to some other members, they organized and formed the Mount Hope Catholic Cemetery association, chartered December 13, 1899, with two acres of land, situated about one mile south of Goodrich. This disagreement caused for the time being some minor disturbances. Meanwhile matters were adjusted and the grounds of the first intended cemetery were exchanged for some additional church land. Some of the bodies of the old St. James' cemetery were now transferred to this new burial place.

The new cemetery contains grave stones and tomb monuments with inscriptions as follows, up to 1919: (Some inscriptions are in French, but their translation in English is given here)



MOUNT HOPE CEMETERY. SACRED HEART PARISH



- Nicholas Rinville,
Co. K, 76th Illinois Infantry.
April 28, 1838-Dec. 16, 1905.
- Edward W. Lewis, 1838-1914.
Bridget Lewis, 1838-1912
May their souls rest in peace.
- T. H. Tetreault, 1906.
Lama Tetreault, died Feb 4, 1906,
Age 41 years.
- Delima Duval, 1837-1884.
George Duval, 1831-1915.
- Joseph Provencal, Sr.,
Born Jan. 25, 1833.
Lecadie, his wife, Born June 3, 1835
Died Oct. 20, 1906.
- Lecadie, daughter of J. L. C. Pro-
vencal. Born, Aug. 29, 1862. Died,
October 29, 1906.
- Solomon Dumas. Born, Sept. 8, 1841.
Died, Dec. 10, 1893. Gone but
not forgotten.
- E. E. Lane. Born, Feb. 2, 1860.
Died, July 13, 1895.
Age 35 years, 5 months, 11 days.
- F. T. Denault
George, son of F. T. & Z. Denault.
July 27, 1899-Feb. 27, 1919.
Rest in peace.
- J. & H. Bertrand (1900).
Louis Bertrand, 1850-1916.
Albe Bertrand, Age 7 years.
Lilly Bertrand. Age 3 years.
Died, Feb. 8, 1884.
- Antoine Saucier, husband of Alber-
tine Dubord. Died, Nov. 5, 1899.
Age 66 years.
- Flore Devost, wife of A. Saucier.
Died, Sept. 30, 1891.
Age 28 years. Pray for her.
- Marie Leduc, wife of Antoine Sau-
cer. Died, July 29, 1889.
Age 47 years. Requiescat in pace.
- Robin, March 10, 1895.
Age 14. 1901.
- Aglale Bertrand,
July 11, 1824-June 25, 1876.
- Leon Bertrand.
Aug. 4, 1824-Aug. 15, 1893.
- Adeline, wife of Geo. W. Bates.
May 15, 1863-May 28, 1896.
- Delima Bertrand, 1838-1894.
- Honore Bertrand.
Oct. 29, 1852-March 9, 1894.
- Julie, his wife, Jan. 17, 1849.
- Bertrand, Honore,
April 15, 1902-Feb. 24, 1913.
- Mose Bertrand, (1900).
Frederic Mayette. Born, March 3,
1858. Died, Oct. 31, 1912.
- Sophie Bertrand,
Jan. 7, 1885-Jan. 7, 1886.
- Henry Flageole,
June 15, 1825-Aug. 28, 1899.
- E. J. Joron,
Louis Joron,
Co. F, 156 Illinois Infantry.
Oct. 1, 1842-Feb. 10, 1910.
- Eleonor, his wife,
April 16, 1839-Sept. 17, 1897.
- Amelia B. wife of Toussaint Denault,
Born, March 16, 1833. Died, Feb.
2, 1899. Age 66 years.
- Edmond Denault,
Died, May 5, 1882.
Age 7 years, 3 months.
- Amelia Boudreau,
Died, Jan. 5, 1882.
Age, 4 years, 6 months.
- Leseé Bertrand,
Died, Feb. 5, 1894.
Age, 31 years.
- Sebastian Boner,
Lot No. 32.

The pioneer settlers who now lay in their resting places until judgment day deserve our respect and grateful remembrance. They came to this country with nothing they could call their own. How well they have succeeded, facts speak for them. Most made their mark and proved to be useful citizens. We now occupy the soil enriched and made sacred by their tears, their toils, their sufferings. May they rest in peace.

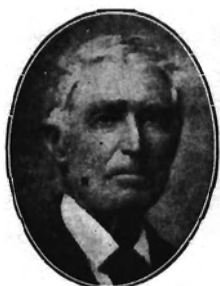
Conclusion

Some parishes have been organized at an early, some at a more recent date, yet all have a history of their own. It will not matter how long a parish exists; its members always organized with a great end in view, and this alone is sufficient reason why we should cherish and treasure their memories, why we should write the history of their noble works. The early settlers have left us one by one, taking to their graves valuable information. This would mean an urgent appeal to those who are supposed to compile at least a concised parish history before it should be too late. This would be rendering a good service to those who later on would like to know something about olden days. Many a pleasant hour could be spent in the perusal of such a history, and this would likewise be of great value to the historian of the parishes of the diocese, and the county, who cannot do justice to his work as long as the history of each parish is not recorded.

And now our task is done. It may not be all that could be expected in a work of this kind, but if only some good has been accomplished the writer shall feel amply rewarded for the many hours spent in arduous and patient research work.

GLORY TO GOD

Everlasting Gratitude to Our Pioneer Settlers.



Nathan Lewis



Mrs. N. Lewis

BUILT THE FIRST HOUSE IN GOODRICH

Settled on the site of the present village of Goodrich in 1853, where he built the first house and planted the popular trees along the front of the church premises and the land property south of same.

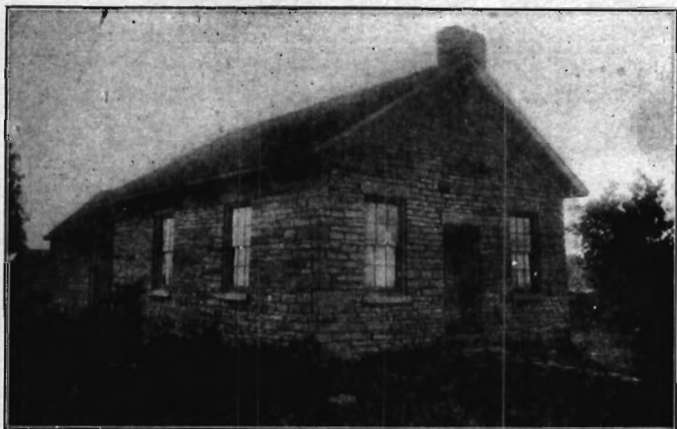
**SOME INTERESTING LANDMARKS IN THE WESTERN
TERRITORY OF KANKAKEE COUNTY.**



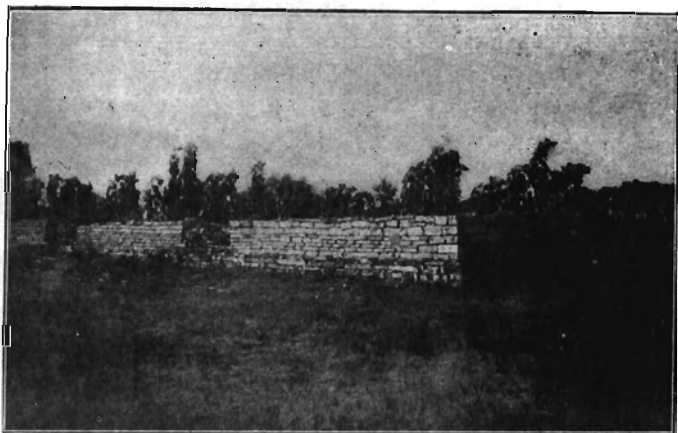
**DR. KNOTTS SUMMER RESIDENCE IN EARLY DAYS. PARTLY BUILT BY NATHAN LEWIS IN 1853. PILOT
TOWNSHIP SECTION 3.**



ONE OF THE FIRST POST OFFICES ALONG THE KANKAKEE RIVER. LIMESTONE TOWNSHIP.



ALONG THE KANKAKEE RIVER. MAPE'S SCHOOLHOUSE.
IN EARLY DAYS, POST OFFICE. LIMESTONE TOWNSHIP
SECTION 22.



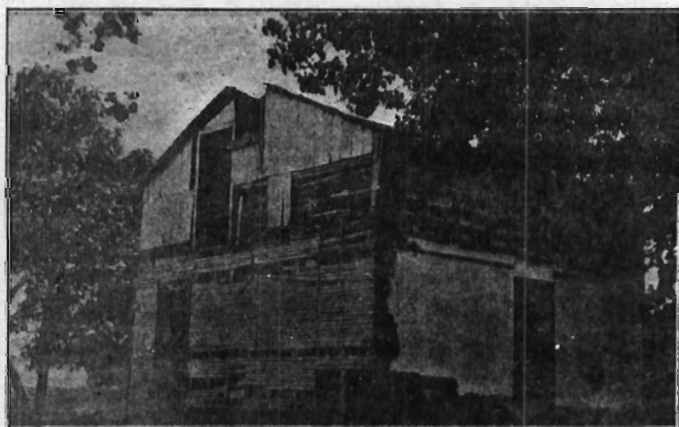
ALONG THE KANKAKEE RIVER. IN EARLY DAYS, HAWKINS BARN,
80'x100' LIMESTONE TOWNSHIP SECTION 22.



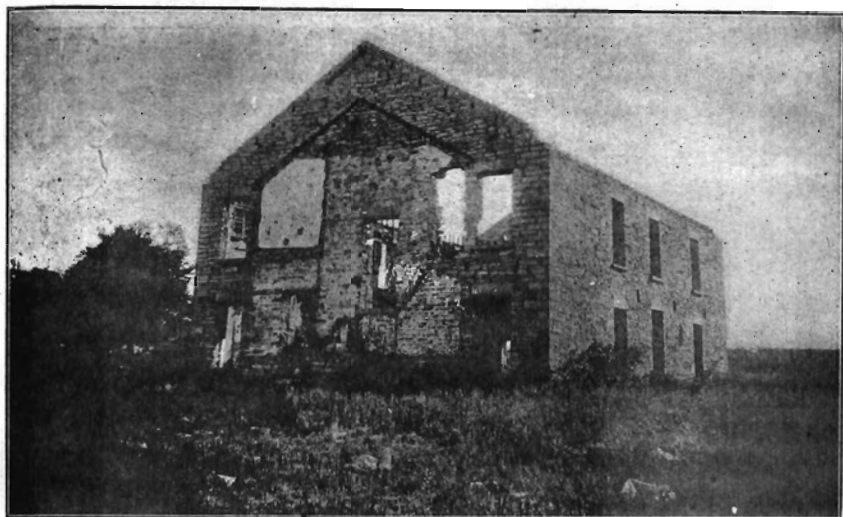
OLD COUNTY POOR HOUSE. SALINA TOWNSHIP SECTION 13.



BUILDING ERECTED IN 1850. AT PRESENT (1920) SAME CLAP-BOARDS, AND FOR THE MAJOR PART SAME WINDOWS AND SHINGLES. SALINA TOWNSHIP SECTION 28. HERTZ'S GROVE.



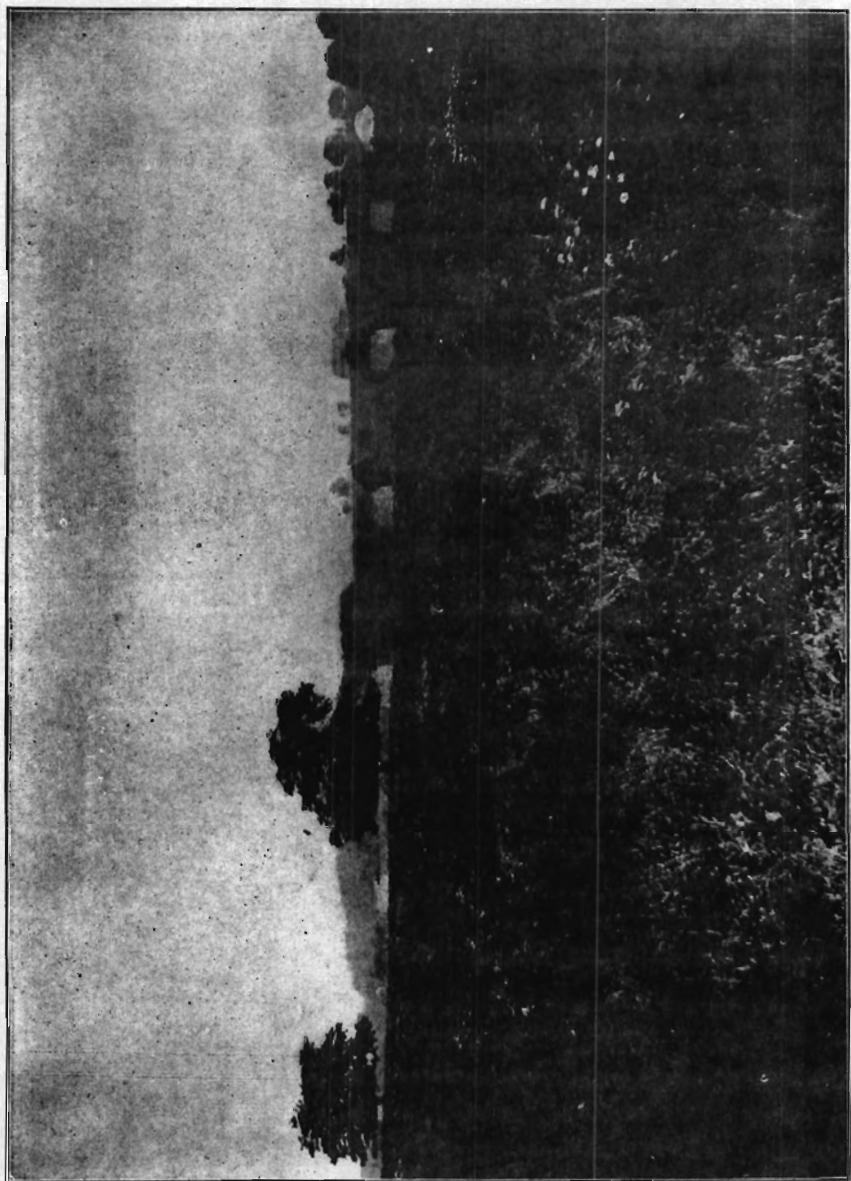
OLD LANDMARK. LOG HOUSE PRESERVED TO THE PRESENT TIME (1920) BUILT IN 1851 BY DAVID HERTZ. LUMBER ON ROOF WAS HAULED FROM CHICAGO WITH A TEAM OF OXEN. SALINA TOWNSHIP SECTION 21.



OLD CREAMERY ALONG THE KANKAKEE RIVER IN USE IN THE 1870'S.
LIMESTONE TOWNSHIP SECTION 9.



SITE OF HANFORD'S LANDING (KANKAKEE RIVER) WILL COUNTY.



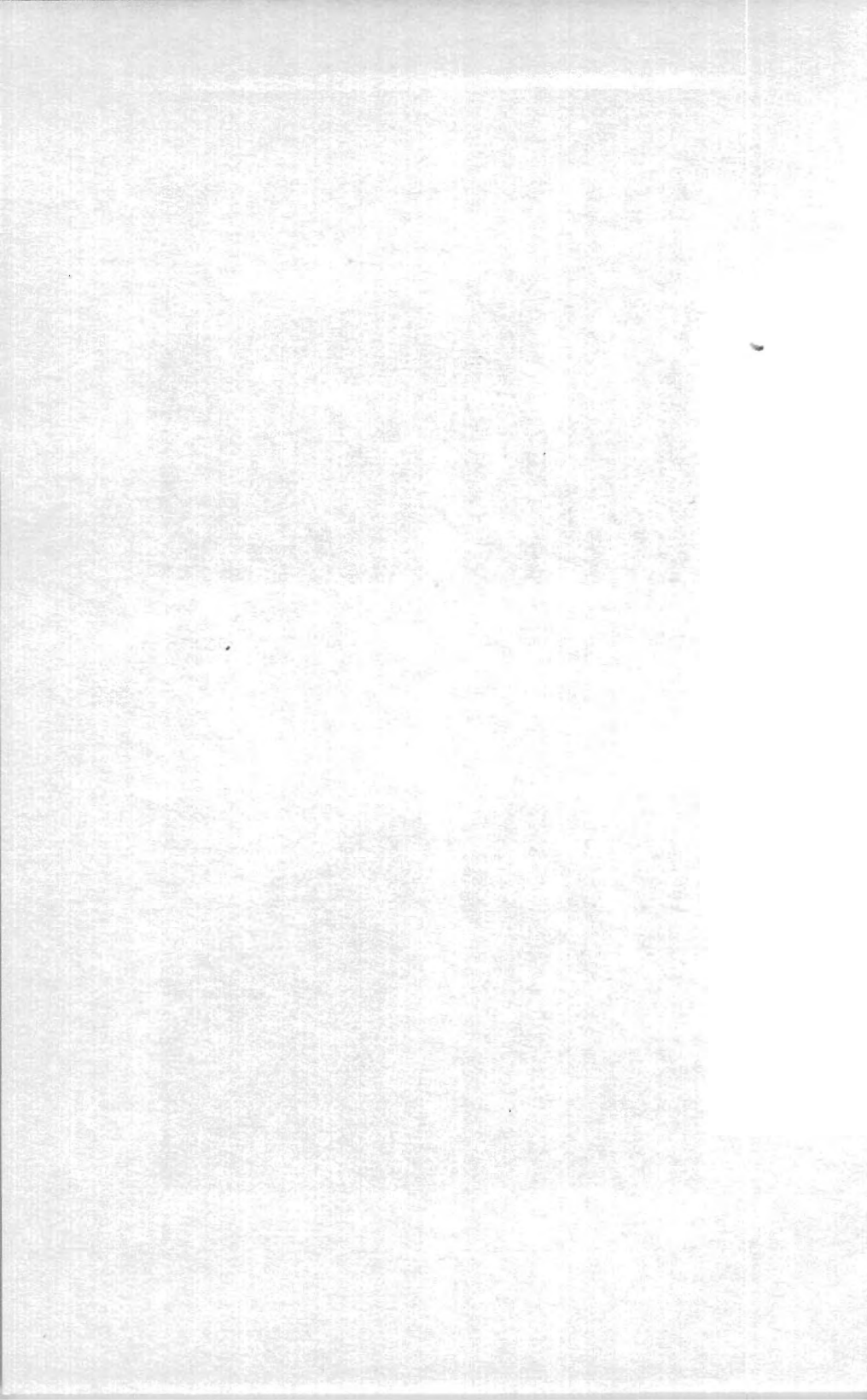
PIERS OF THE PROPOSED DECATUR AND STATE LINE R. R. IN THE 1870'S
KANKAKEE RIVER. WILL COUNTY



DWELLING HOUSE OF MOREY T. FRINK (PILOT GROVE). SOUTH PART ERECTED BY JOEL B. HAWKINS, WHO BUILT THE FIRST LOG HOUSE OF BLACK WALNUT TREES IN PILOT GROVE IN THE EARLY 1850'S.



PILOT TOWN HOUSE



Appendix

Historical Synopsis of the Parishes of Kankakee County

Including a Few Other Contiguous Parishes.

The presentation of a few historical notes and dates of the following parishes was deemed justified from the fact that the parishes historically described in the preceding pages and a few others were originally more or less connected with and attended by a common mother parish. For the sake of completeness and in order to gain a better general view other parishes were included in this synopsis and this should not be considered as a matter altogether foreign to the sketch.

BOURBONNAIS **(Maternity B. V. M.)**

- I. Missionary priests from Vincennes, Ind. and other places:
 - Rev. Crevier.
 - Rev. Maurice de St. Palais. Stopped several times at Bourbonnais.
 - Rev. Hypolite Pontavisse. Built first log church.
 - Rev. Stephen Theodore Badin. A native of France and first ordained priest in the United States; last visit to Bourbonnais, June 13, 1846. (78 years of age. 53 years a priest.)
- II. Resident Pastors:
 - Rev. Rene Courgeault, from France 1847-1852
 - Rev. B. Wieg (L'Huicq) 1852
 - Rev. Chas. Chiniquy 1852-1853
 - Rev. J. Maistre (Lemaitre) 1853-1854
 - Rev. Antoine Lebel 1854-1855
 - Rev. Louis Cartuyvels, from Belgium 1855-1856
 - Rev. Isaac Desaulniers 1856-1857
 - Rev. Alexis Mailloux 1857-1860
 - Rev. Joseph Neree Gingras 1860-1863

Rev. C. Ducroux, from Switzerland	1863-1864
Rev. Jacques Cote	1864-1865
Rev. P. Beaudoin, C. S. V.	1865-1900
Rev. Cyrille Fournier, C. S. V.	1900-1908
Rev. M. T. Dugas, C. S. V.	1908-1912
Rev. J. A. Charlebois, C. S. V.	1912-1918
Rev. M. J. Marsille, C. S. V.	1918-1919
Rev. P. Dube, C. S. V.	1919-1920
Rev. W. J. Surprenant, C. S. V.	1920-

Most of the above priests came from Canada.

ST. GEORGE.

(St. George)

First wooden chapel in 1848.

- I. Missionary Priests:
- | | |
|---|-----------|
| Rev. Rene Courgeault, from Bourbonnais .. | 1849-1853 |
| Rev. Epiphane Lapointe | 1853-1860 |
- II. Resident Pastors:
- | | |
|-------------------------------------|-----------|
| Rev. Epiphane Lapointe | 1860-1861 |
| Rev. Pierre Paradis | 1861-1871 |
| Rev. Prosper Beaudry | 1871-1879 |
| Rev. Urgel Martel | 1879- |
| Rev. Jos. C. Lesage | 1879-1889 |
| Rev. Armand L. Labrie | 1889-1896 |
| Rev. Onezime R. Boudreau | 1896-1898 |
| Rev. F. X. Chouinard, C. S. V. | 1898-1903 |
| Rev. A. J. Tardif, C. S. V. | 1903-1909 |
| Rev. Cyrille A. Poissant | 1909- |

ST. ANNE.

(St. Anne)

Organized by Rev. Charles Chiquy in 1853. First resident pastor, 1853-1856. From 1859 attended by the pastors of Beaverville (Ste. Marie): Rev. Lapointe, 1859-1860; Cote, 1860-1862; Ducroux, 1862-1863; Gauthier, 1863; Marshal, 1863-1866; Boisvert, C. S. V., 1866; Kertson, 1866-1869 and Demers, 1869-1871.

Resident Pastors:

Rev. Michael Letellier	1871-1883
Rev. J. U. Martel	1883-1886

Rev. Z. P. Bernard 1887-

During the 18 months absence of Father Letellier, the parish was attended by Father L. Michaud and Father A. Goulet.

L'ERABLE.
(St. John the Baptist)

Included in Chicago diocese up to 1877.

Name given to locality by P. Spink from St. John, P. Q., Canada. On the occasion of the Fourth of July celebration a few maple trees (L'Erable in French) were planted at his residence a half mile north of the church, and it was decided to call the hamlet L'Erable. The maple leaf and the beaver are the French Canadian emblems (Beaver-ville). At first a small chapel was built and later enlarged. About 1858 a Belgian syndicate was formed to buy a tract of land four miles north of the village. The result was an emigration of Belgian families from villages north of Namur and Jodoigne (Brabant). Some of the pioneer settlers emigrated to Kansas (Concordia), some to Minnesota (Marshall) and a few families settled in North Dakota, Nebraska and Iowa.

Originally the parish was attended as a mission from Bourbonnais, Kankakee, St. Anne (about 1853-1856) Beaverville, Gilman, Clifton and Ashkum (probably 1856-1858). Resident Pastors:

Rev. C. Brissard 1856-1859

Rev. C. Vandeprel, from Holland 1859-1863

Rev. J. Cote, attended from Kankakee 1863-1864

Rev. Pierre Pernin 1864-1867

For three or four months no pastor; parish attended by Rev. Pernin, who remained a few months in Clifton.

Rev. J. Clement 1868-1873

For sometime no pastor; parish attended from Bourbonnais (Rev. Roy, Rev. Mainville, Rev. Rouquier) up to September, 1874.

Rev. J. Rouquier 1874-1886

Present church built in 1874, also a school but no sisters to teach could be secured.

Rev. Recouvreur 1886-1889

Rev. H. Delbaer, from Belgium 1889-1890

Rev. J. Lizee 1890-1894

Built new parsonage.

Rev. J. E. B. LeVasseur 1894-1919

Improved and reorganized the school built by Father Rouquier, engaged the Sisters of the Sacred Heart of Mary to teach.

Rev. P. E. Lebon 1919-

KANKAKEE.

(St. Rose of Lima)

Pastors: Rev. Louis Cartuyvels, 1855, had charge of the Outmissions of L'Erable, St. George and Manteno and the district west of Kankakee; later other missions at St. Anne and Beaverville were added for a short time only. After 1855 no pastor until the arrival of:

Rev. J. B. Champeau, April to October 1857

Rev. Epiphane Lapointe 1857-1860

Attended all the neighboring missions, left for Canada, made pastor of Rimouski, where he died Oct. 28, 1862, at the age of 40.

Rev. Alexis Mailloux 1860-1862

"Le Grand Vicaire Mailloux". Opened the Academy of the Sisters of the Congregation of Notre Dame (Montreal). Counteracted with distinct success the pernicious influence of the apostate priest Chiniquy. Returned to Quebec in 1862.

Rev. Jacques Cote, from Beaverville 1862-1864

Rev. Joseph M. Langlois 1864-1866

Nine months after his ordination. Left June, 1866 for Hotel Dieu hospital (Quebec) where he died in that same year.

Rev. A. Marshal 1866-1871

From St. Marie-aux-Mines (Alsace) where he returned, May 1871. St Viator's college having charge of the parish to September.

Rev. P. Paradis, from St. George 1871-1894

Actual church built, 1874, ready for dedication by Bishop Foley, 1877. Clergy present: Rev. Cote, Beaudoin, Gonand, McShane, Letellier, Mainville and Marsile.

Rev. A. D. Granger 1894-

Church enlarged, 1907. Installed art glass windows, 1910. Arrangements made for the Italians to worship in St. Rose church.

BEAVERVILLE.

(St. Mary's)

Included in Chicago Diocese up to 1877.

I. Missionary Priests:

Parish organized 1856; first church built 1857. Attended by Rev. C. Brisard, pastor of L'Erable 1856-1859.

II. Resident Pastors:

Rev. Epiphane Lapointe	1859-1860
Rev. J. Cote	1860-1862
Rev. C. Ducroux	1862-1863
Rev. T. Gauthier	1863-
Rev. A. Marshal	1863-1866
Rev. L. Boisvert, C. S. V.	1866-1867
Rev. G. S. Kertson	1867-1869
Rev. L. B. Demers	1869-1872
Rev. J. Rouquier	1872-1874
Rev. C. Clement	1874-1881
Rev. H. Delbaer	1881-1882
Rev. L. G. Langlais, C. S. V.	1882-1902
Rev. M. T. Dugas, C. S. V.	1902-1908
Rev. M. J. Marsile, C. S. V.	1908-1913
Rev. J. E. Belair, C. S. V.	1913-1917
Rev. A. Tardif, C. S. V.	1917-1918
Rev. W. Surprenant, C. S. V.	1918-1920

MANTENO.

(St. Joseph's)

The first settlers attended religious service at Bourbonnais and St. George from where it was attended by Rev.

P. Paradis, at one time. He built the first small frame church, (1862) where the parsonage stands at present.

Resident Pastors:

Rev. George S. Kertson 1870-1879

Built large frame church in 1876, destroyed by fire in 1898.

Rev. A. Goulet 1879-1881

Rev. J. M. Mevel 1881-1882

Rev. A. L. Bergeron 1882-1884

Rev. F. Chouinard 1884-1898

Rev. O. R. Bourdeau 1898-

LEHIGH-IRWIN DISTRICT

(St. James)

Organized 1862 or 1863.

MOMENCE.

(St. Patrick's)

Originally attended from either St. Anne or St. George.

Mission established by Rev. Epiphane Lapointe who was succeeded by the following:

Missionary Priests:

Rev. P. Paradis 1867-1872

Rev. M. Letellier 1872-1878

Rev. Joseph Lesage 1878-1885

Rev. Z. Berard 1885-1890

Resident Pastors:

Rev. George S. Kertson 1890-1895

Rev. A. L. Labrie 1895-

Temporary pastor of St. George until 1896. Erection of parsonage, 1896, of St. Patrick's Academy, 1906, of new church, 1914.

PILOT.

(SS. Peter and Paul's)

Organized, 1869.

PAPINEAU.

(St. Joseph's)

Included in Chicago Diocese up to 1877.

St. Joseph's church at Papineau was organized in 1872.

First pastor, Rev. John Alphonse Rouquier, missionary ap-