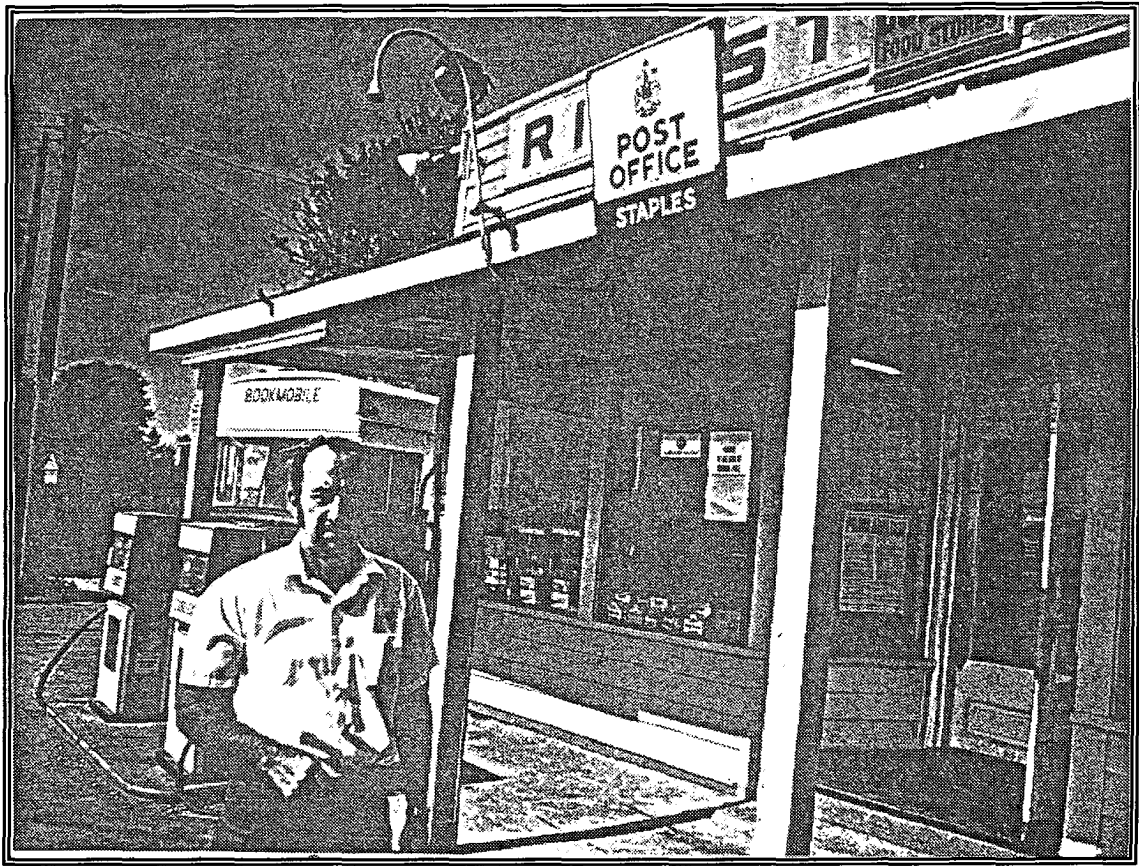


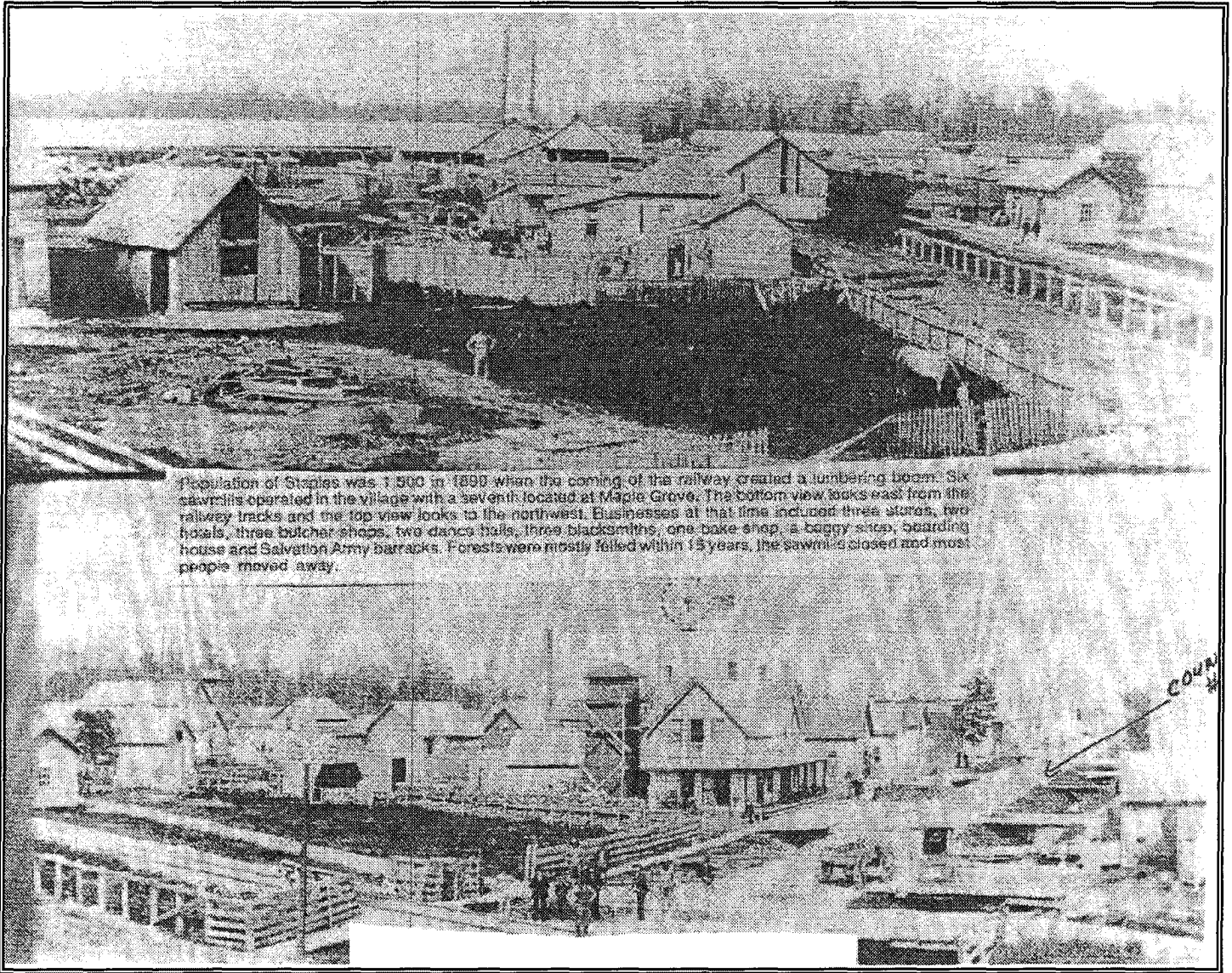


À NOTER : CE MARIAGE A EU LIEU EN 1970
DANS L'ÉGLISE DE STAPLES
MAIS NE PARAÎT PAS AUX
REGISTRE DE LA PAROISSE



MARIAGE DE CLAIRE RIVEST
ET DE
LÉO LARANTE
18 JUILLET 1970





Population of Staples was 1,500 in 1890 when the coming of the railway created a lumbering boom. Six sawmills operated in the village with a seventh located at Maple Grove. The bottom view looks east from the railway tracks and the top view looks to the northwest. Businesses at that time included three stores, two hotels, three butcher shops, two dance halls, three blacksmiths, one bake shop, a buggy shop, boarding house and Salvation Army barracks. Forests were mostly felled within 15 years, the sawmills closed and most people moved away.

Staples
fin des 1800, début 1900